



FACTSHEET 3 ON GLOBAL MONITORING PLAN DATA WAREHOUSE

WORKING WITH GMP DWH DATA REPOSITORY FOR DATA PROVIDERS

GMP DWH DATA – GENERAL REMINDER

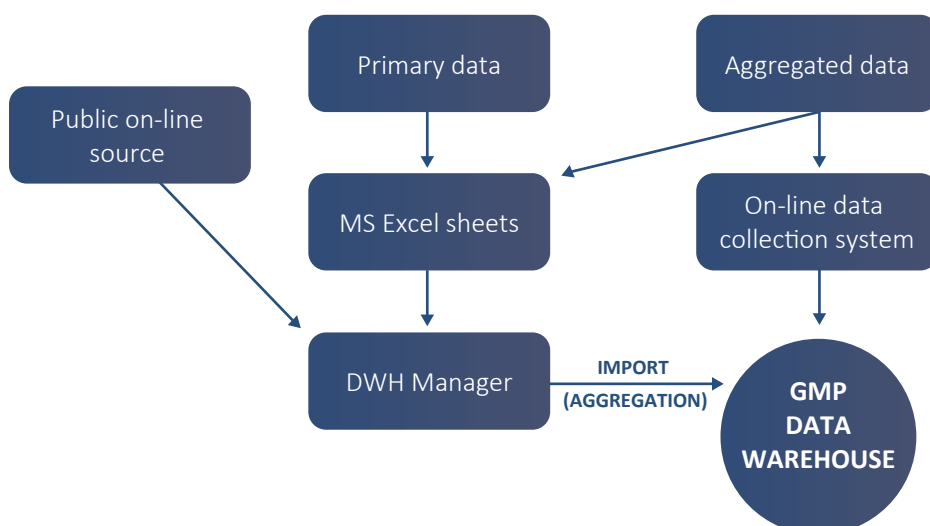
Global Monitoring Plan Data Warehouse (GMP DWH) has been designed for importing both **primary and aggregated** POPs data from four environmental matrices – **ambient air, human blood, human milk and water**.

Data structure is **fully standardized** into three key items: **site, sampling attributes and measurement** and POPs data are imported to the GMP DWH Data Repository through individual import branches organized per environmental matrix.

Imported data fields have predefined form and are either **text, number or item selected from a particular code list**. Code lists are available in **analytical data reporting spreadsheets** (MS Excel format) on the website <http://www.pops-gmp.org/dwh> or are embedded in the GMP DWH Data Repository.

GMP DATA IMPORT

POPs data to be imported into GMP DWH are identified only through Regional Organization Group. Online data import into GMP DWH is for authorized users only.



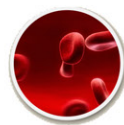
What to do if I am a data owner and I would like to contribute with my data to GMP and make them visible in the GMP Data Warehouse?

If your data are on persistent organic pollutants listed in the Stockholm Convention (or on candidate ones) and come from the four core matrices (ambient air, human milk or blood, water), please contact ROG coordinator of your UN region. Correct procedure for data identification is through ROG members who can recommend further POPs data for import to the GMP DWH.

STEP-BY-STEP DATA IMPORT INTO THE GMP DWH DATA REPOSITORY

login to data repository

<http://dwh.pops-gmp.org/>



SELECT MATRIX

