



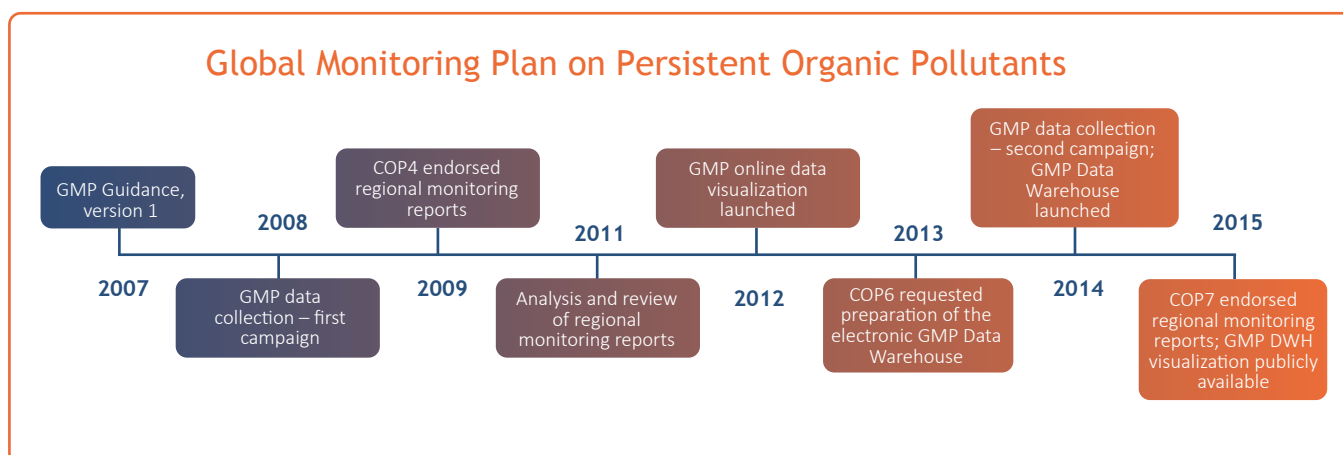
FACTSHEET 1 ON GLOBAL MONITORING PLAN DATA WAREHOUSE

GMP DWH OVERVIEW

WHAT IS GMP DWH?

The **Global Monitoring Plan Data Warehouse (GMP DWH)** is an online tool developed for handling, storage, approval and visualization of data on persistent organic pollutants (POPs) under the Stockholm Convention.

The GMP DWH holds POPs monitoring data generated in the frame of the Global Monitoring Plan worldwide on the basis of the **decision SC-6/23** by the COP6 in 2013. The tool comprises two main parts – **data repository and data visualization** portal. In addition, tools for statistical processing and analyses as well as presentation modules and export tools are available to users.



SCOPE AND CONTENT

GMP DWH compiles, archives and shows aggregated global data on POPs listed in the Stockholm Convention including supplementary data, from core matrices – **ambient air, human tissues – breast milk and blood, and water**. The aim is to identify changes in POP levels over time and trends, where available.

At present, it contains information collected in the framework of the Global Monitoring Plan by international and national monitoring programmes for air, by international surveys for milk and by research cruises for water. All data contained in the GMP DWH are validated and approved by the regional organization groups of the five UN regions. These data are presented also in the **GMP regional monitoring reports**.

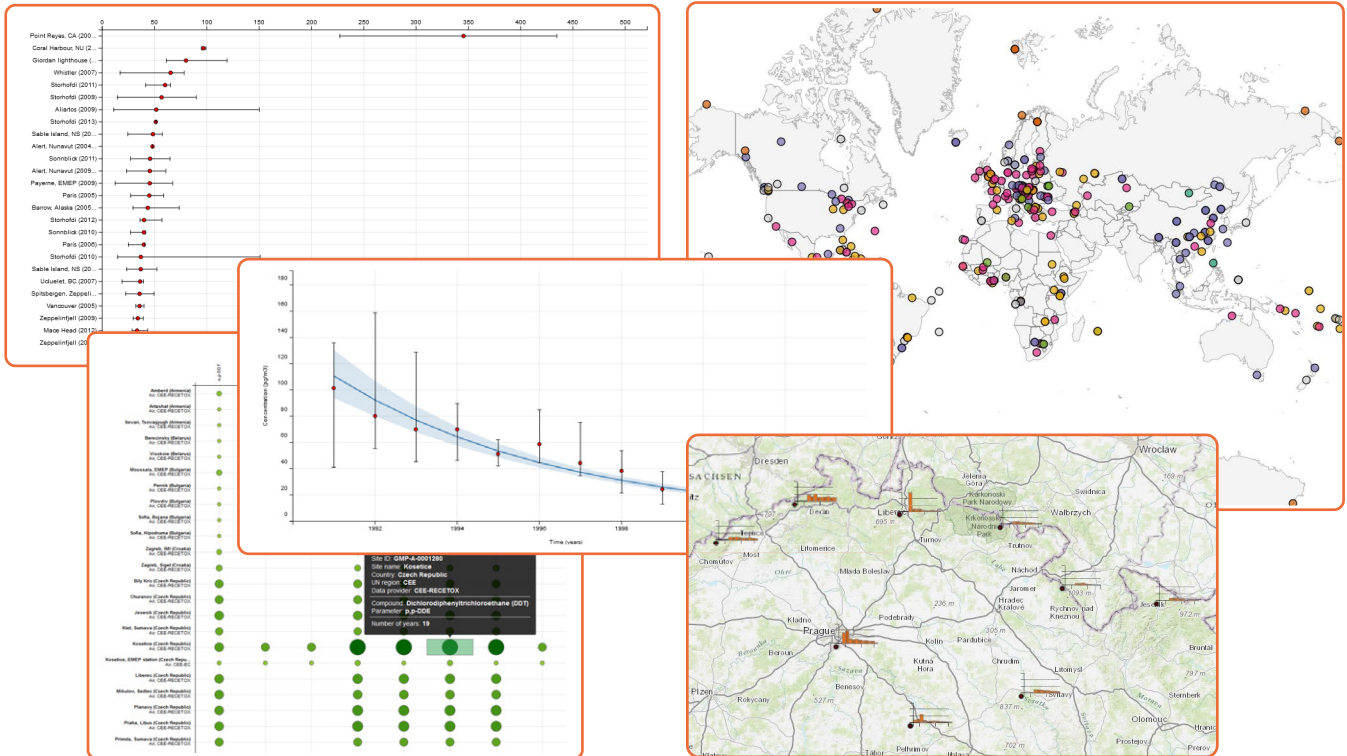
ACCESS

The electronic tool – GMP DWH – is publicly accessible, online, via Internet. Standard web browsers are to be used (Internet Explorer, Mozilla Firefox, Google Chrome) and their most recent versions are recommended.

IMPORTANT WEB LINKS

GMP INFORMATION PORTAL
DATA REPOSITORY (authorized access)
DATA VISUALIZATION

<http://www.pops-gmp.org/>
<http://dwh.pops-gmp.org/>
<http://www.pops-gmp.org/visualization-2014>



WHO IS RESPONSIBLE FOR GMP DWH?

The GMP DWH has been developed by the Stockholm Convention Regional Centre in the Czech Republic through the Research Centre for Toxic Compounds in the Environment and the Institute of Biostatistics and Analyses, Masaryk University, Brno, Czech Republic, under the guidance of the GMP Global Coordination Group, and Secretariat of the Stockholm convention mandated by the decision SC-6/23 in line with Chapter 6 of the Guidance on the Global Monitoring Plan for Persistent Organic Pollutants.

ADDITIONAL INFORMATION

A key resource document for the GMP DWH is the Guidance on the Global Monitoring Plan for Persistent Organic Pollutants (the most recent version is found in [UNEP/POPS/COP.7/INF/39](#)) providing a more detailed information related to sampling of core matrices (air, human breast milk and blood; part on water is currently under preparation) and indication of chemicals that are to be analyzed in samples including their isomers, congeners or degradation products, where necessary. The Guidance document also provides more details on statistical processing of generated data/information as well as defines a structure for regional reports.